

# **Guam Memorial Hospital Authority Emergency Response (COVID-19) Decontamination Procedure**

## **INTRODUCTION:**

- Decontamination (DECON) is a term used to describe a range of processes, including cleaning, disinfection, and/or sterilization. Which remove or destroy contamination, thereby preventing infectious agents or other contaminants reaching a susceptible body site in sufficient quantities to cause infection or any harmful response.
- In accordance with the Emergency Preparedness Manual, and in conjunction with Policy No. 500 Chemical, Biological, Radiological, Nuclear & Explosives (CBRNE)/Weapons of Mass Destruction(WMD)-Preparedness Plan decontamination principles were used to develop a procedure to stress control measures on clinical work practices, and containment.

## **PURPOSE:**

- The main developmental purpose of this procedure is to develop best practices for direction in an emergency response to a pandemic (COVID-19).
- By applying organized technical decontamination techniques to the clinical environment work practices to limit the spread of infectious diseases, and containment within identified exclusion zones within the hospital and/or COVID Isolation Facility.
- It is GMHA's main objective to protect the health and well being of all patients, and responding healthcare workers during this emergency response to COVID-19.

## **PROCEDURE:**

- Create a decontamination plan that effectuates a control measure on staff's Personal Protective Equipment work practices (i.e. Proper removal/doffing, and disposal) to ensure max personnel safety.
- Build and test contamination reduction zone for adequacy and flow with properly marked areas to be easily traversed with supporting decontamination equipment.
- Post plan at the support site(s) and the exclusion zone(s) as aides for personnel to refer to at any time.

- Train (Just in time training) all clinical personnel, support personnel, security personnel, and any contract work personnel that will be entering the exclusion(hot) zone(s).
- Organize a competency evaluation on all personnel with a training exercise evolution that incorporates proper donning/doffing of PPE's, and the understanding of the technical decontamination techniques implemented on work practices. (All personnel must competently demonstrate these essential actions prior to commencing any work within the exclusion zone(s).
- Have the decontamination line manned (If possible, select dedicated staff for DECON observation) for safety observation of personnel moving through the contamination reduction process.
- Ensure personnel conduct a pre/post medical evaluation when assigned to hospital/CIF exclusion zones (Head Nurse to organize and conduct).
- Consistently monitor site(s) for staff compliance and competency, and re-train for improvement or changes made from authorities having jurisdiction as needed for compliance or if cross-contamination occurs.

**REFERENCES:**

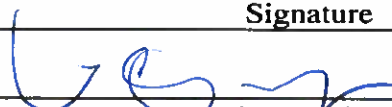
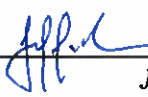

- **GMHA Emergency Preparedness Manual: Policy No. 500 (CBRNE), (WMD) –Preparedness plan, Policy No. 405 Mass Casualty Plan-Triage, DECON, & Treatment Areas, & Policy No. 434 Mass Casualty Plan-Medical Surge Response Plan.**
- **Occupational Safety and Health Agency (OSHA): 29CFR 1910.120, HAZWHOPER-29 CFR 1910.132, Personal Protective Equipment- 29 CFR 1910.133**
- **National Institute of Safety and Health (NIOSH)**
- **Center for Disease Control: [www.cdc.gov](http://www.cdc.gov)**
- **Federal Emergency Management Institute (FEMA)**

Completed on 22March2020

**GUAM MEMORIAL HOSPITAL  
AUTHORITY  
REVIEW AND ENDORSEMENT  
CERTIFICATION**

The signatories on this document acknowledge that they have reviewed and approved the following:

- o by laws                                      Submitted by Department/Committee: Safety and Security Dept. /EOCC
- o Rules & Regulations                      Emergency Preparedness Manual/Mass Casualty Plan: Triage, DECON, & Treatment Areas Policy No. 405
- o Policies & Procedure                      Title: Technical DECON Procedures developed for COVID-19 Response

Reviewed/Endorsed	Date	Signature
	26 MARCH 2020	
Title	Name: Timothy T.F. Chargualaf Title: Hospital Safety and Security Administrator, Acting	
Reviewed/Endorsed	Date	Signature
	26 MARCH 2020	
Title	Name: Jeffrey Ventura Title: Hospital Chief Planner	
Reviewed/Endorsed	Date	Signature
	5-04-2020	
Title	Name: William N. Kando, MSM Title: Associate Administrator of Operations, Environment of Care Chairman	

## **Doffing Procedure:**

**Note: To help prevent cross-contamination and/or exposure. Do not abruptly Remove/Doff PPE in any of the identified zones.**

### **I. Hot Zone to Warm Zone II**

#### **- Gown/TYVEK Suit II**

At the line separating the Hot and Warm zones begin removing your gown/Tyvek suit by carefully un-securing the tethers/zipper (wipe zipper with Sani cloth/Clorox wipe before doffing), peeling off and away from top to bottom while inverting the gown/suit at the same time, dispose if necessary.

#### **- Boot Cover II**

Remove boot covers one at a time while placing each foot into the Warm zone after removal.

#### **- Gloves II**

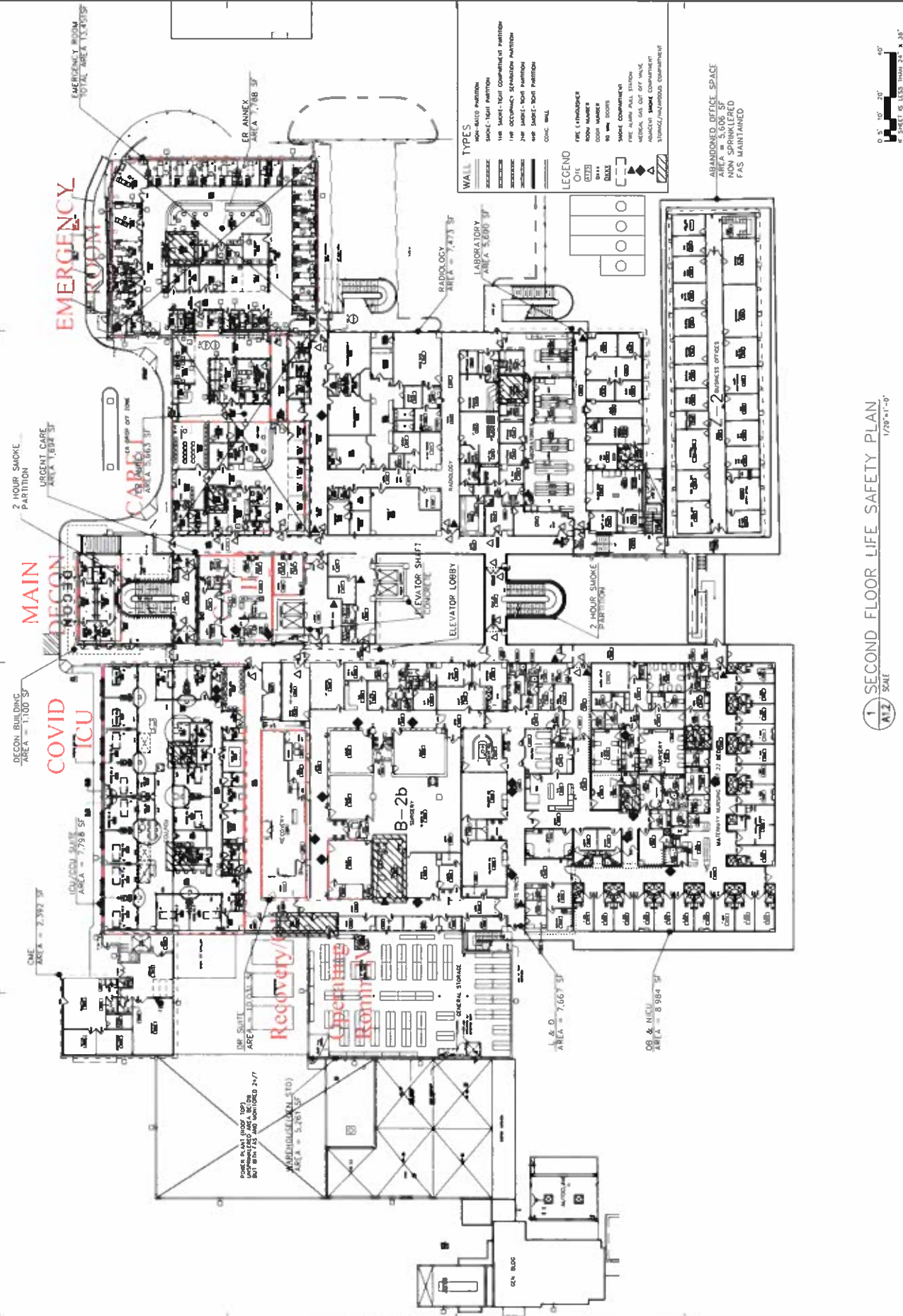
If you were wearing two pairs as part of the assigned PPE tiers, this is where the first layer is to be removed, if not, then exercise proper hand washing etiquette on gloved hand before advancing into the Warm zone.

### **II. Warm Zone to Cold Zone II**

- Remove remaining PPE's in the Warm zone utilizing the Proper sequence explained above going from Warm zone to Cold zone II and being careful not to remove abruptly.

- Place contaminated PPE's upon removal into the doffing pit at the line separating the Warm Zone from the Cold zone, repeating the procedure going into the Cold Zone. If shower is provided it is optional, but strongly recommended.

No.	Description	Date



REVISIONS

Project:  
**CMHA LIFE SAFETY DRAWINGS**

Tasking:  
**SECOND FLOOR LIFE SAFETY PLAN**

Scale: AS SHOWN  
Date: 05/22/16  
Project No: 160207  
Drawing No: LS 2

DECON BUILDING  
AREA = 11,000 SF

**COVID ICU**

**Recovery/Romms**

**EMERGENCY ROOM**  
TOTAL AREA 15,935 SF

**ER ANNEX**  
AREA 7,118 SF

**CARDIAC CARE**  
AREA 3,183 SF

**URGENT CARE**  
AREA 1,824 SF

**RADIOLOGY**  
AREA 7,477 SF

**LABORATORY**  
AREA 5,000 SF

**ABANDONED OFFICE SPACE**  
AREA = 5,605 SF  
NON SPRINKLERED  
FAS MAINTAINED

**DECON BUILDING**  
AREA = 11,000 SF

**1 SECOND FLOOR LIFE SAFETY PLAN**  
SCALE: 1/20"=1'-0"

0 5' 10' 20' 40'

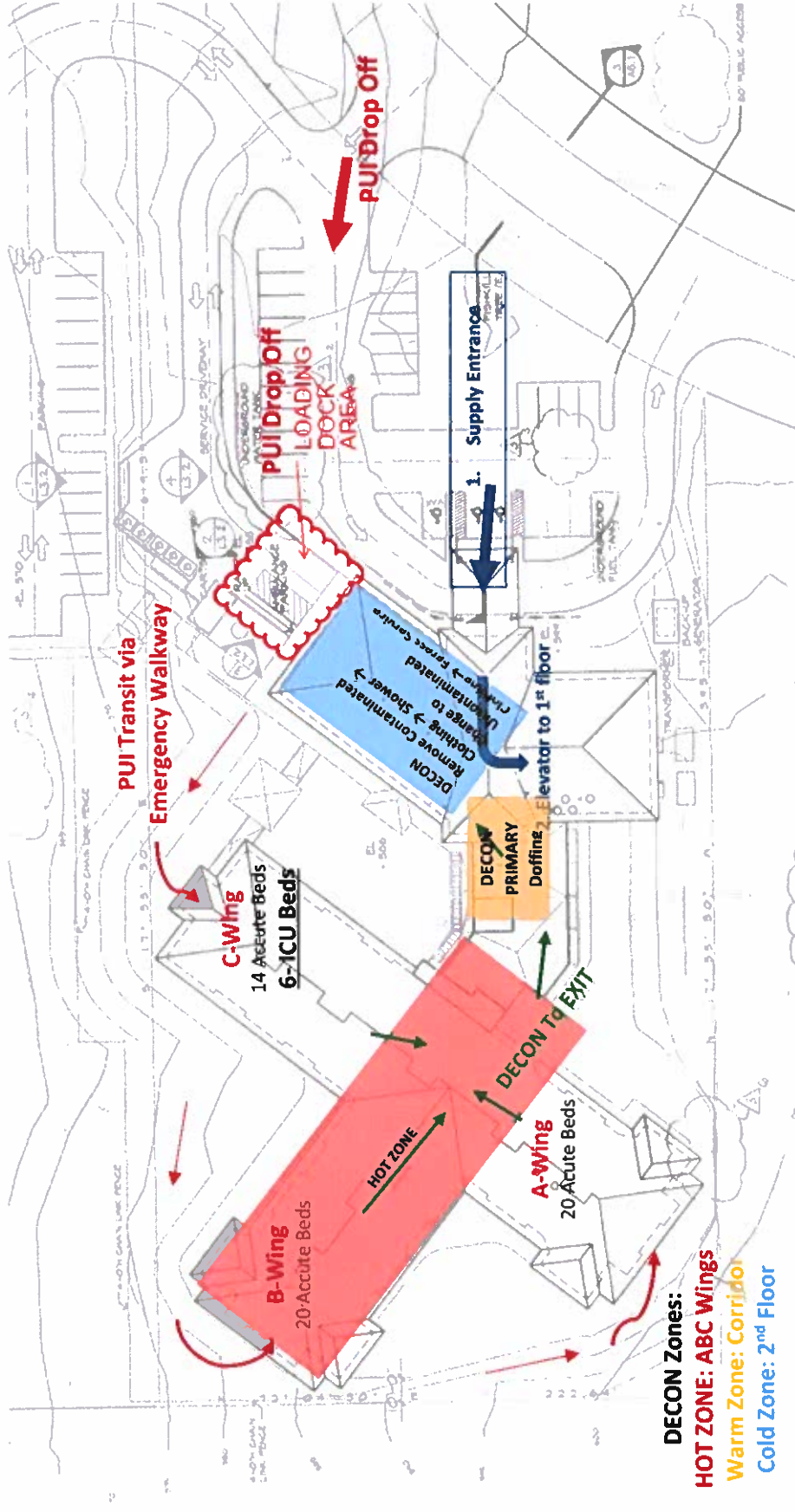
IF SHEET IS LESS THAN 24" X 36"  
REDUCED PRINT - USE GRAPHIC SCALES





The Skilled Nursing Facility  
 COVID-19 Isolation/Care Facility Operation

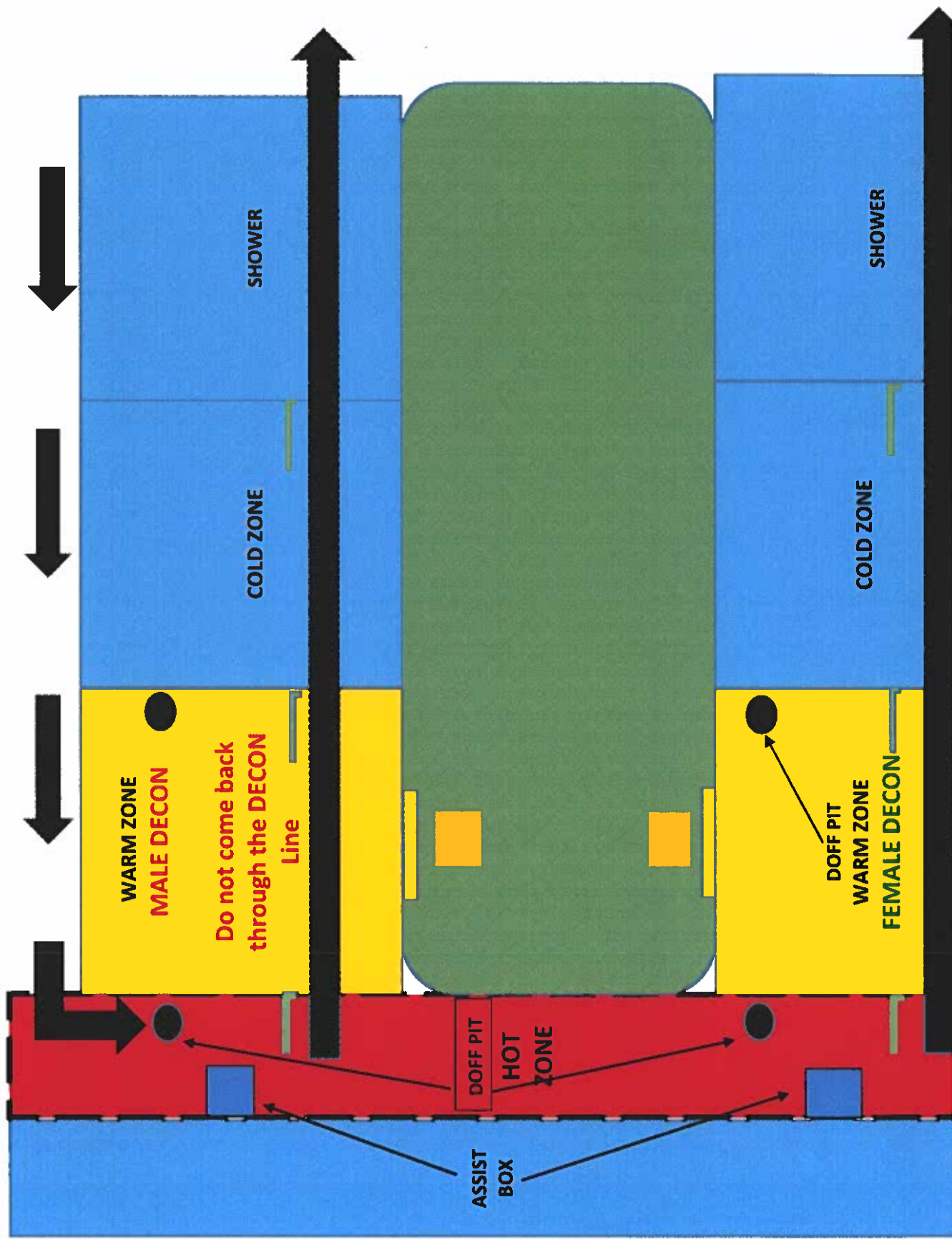
PUI Drop Off / Supplies Delivery Pathway / DECON Area Exit to Main Lobby



Created: March 14, 2020  
 By: J. Ventura, T. Chargualaf  
 Endorsed: W. Kando



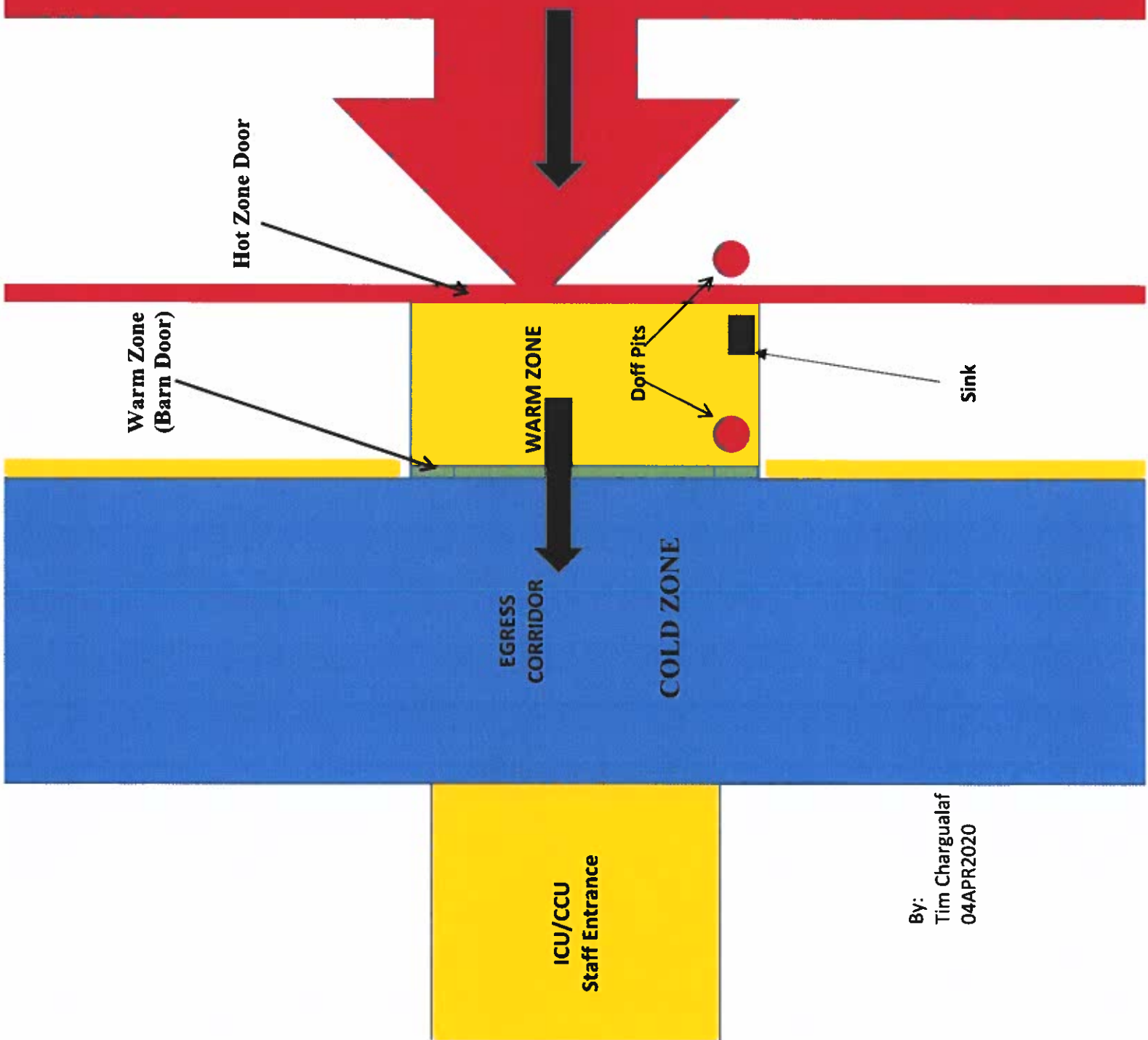
# GMHA MAIN DECON SITE



# CARE II DECON Plan

HOT  
ZONE

MAIN ENTRANCE



By:  
Tim Chargualaf  
04APR2020

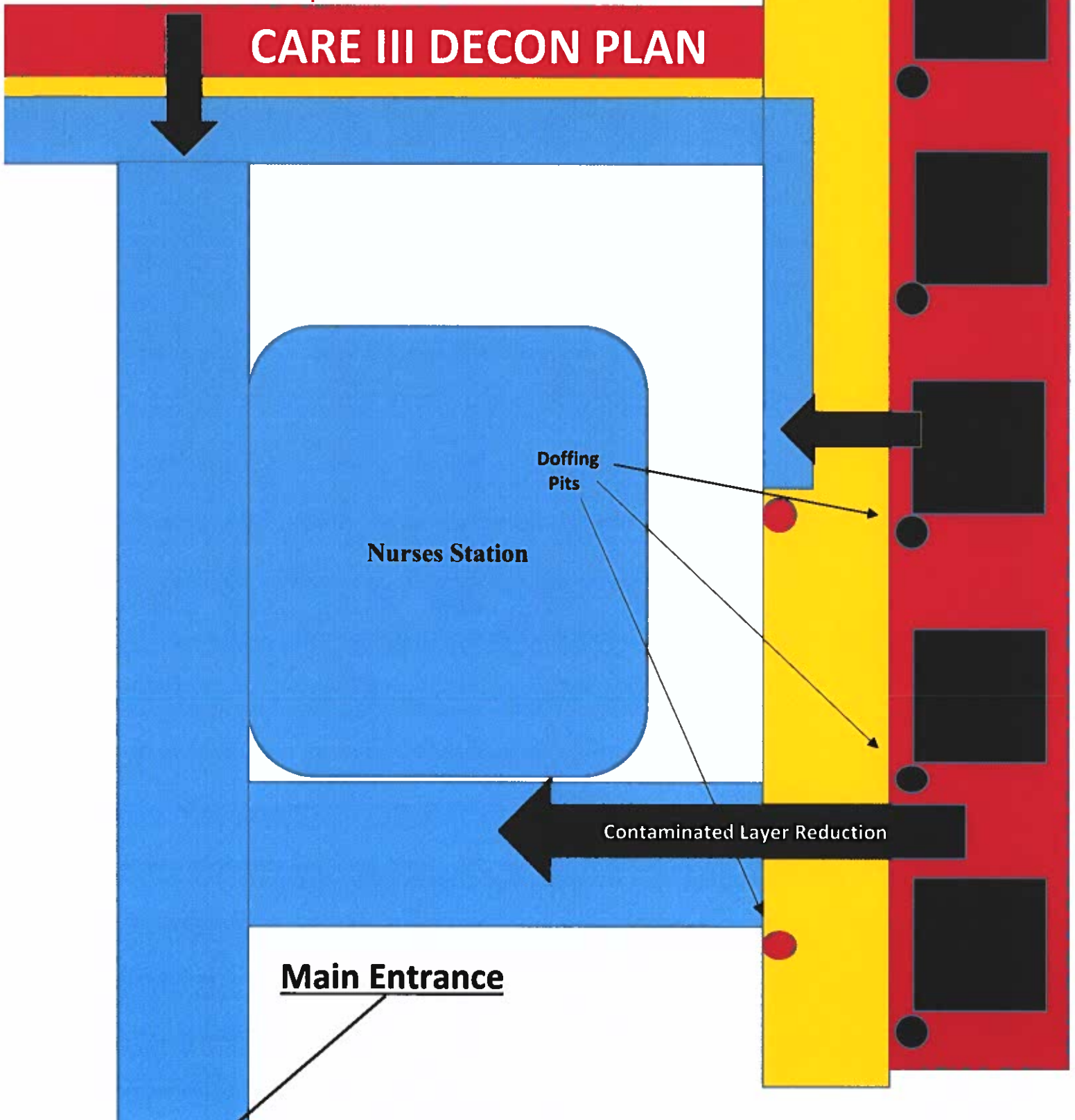
# Contamination Reduction Process

**Hot Zone:** Patient rooms (BLACK and RED)

**Warm Zone:** Corridor immediately outside patient room (Yellow)

**Cold Zone:** Corridors leading to nurse station/Showers/Clean Utility/(Blue)

Directional arrows represent flow of contamination reduction.

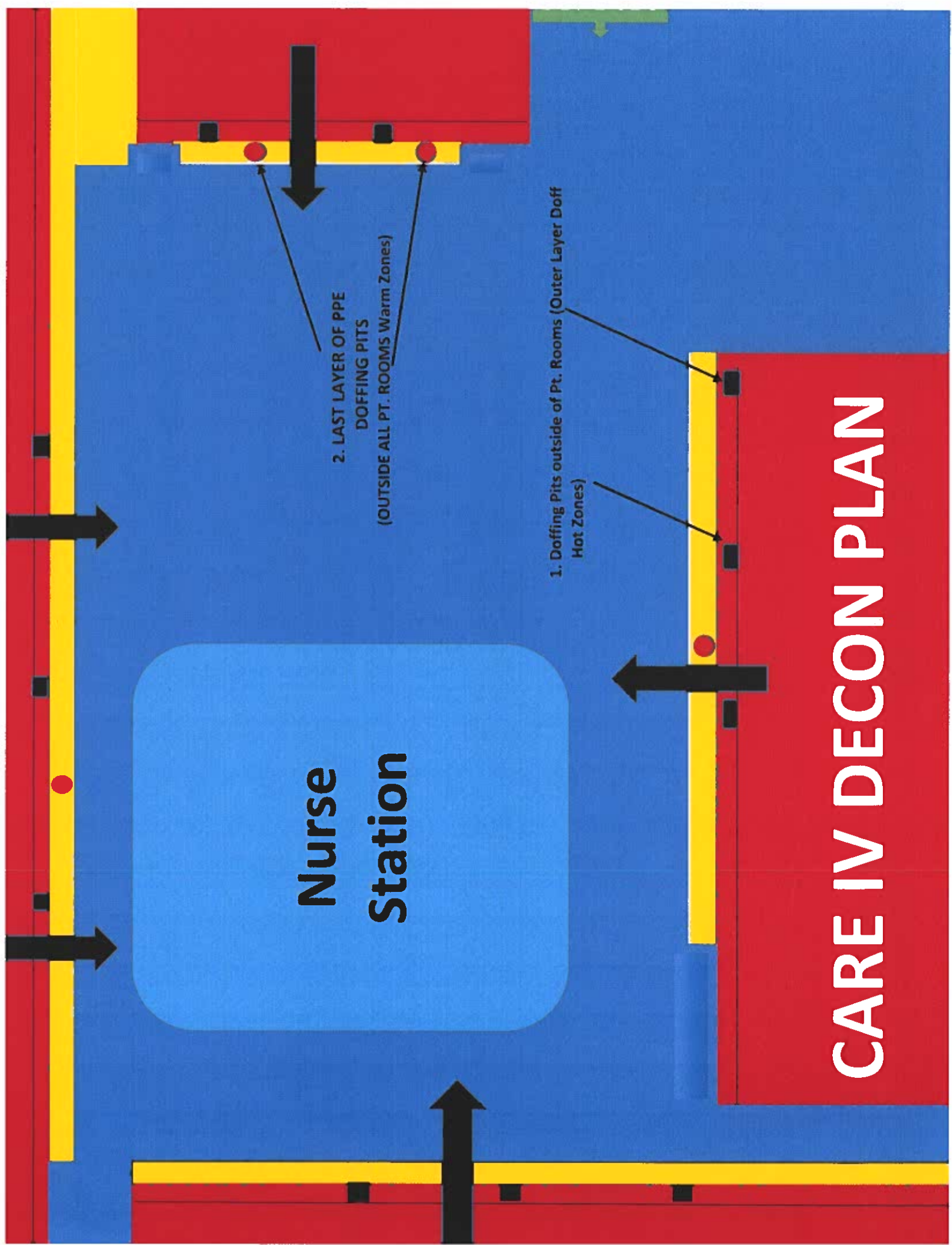


**Nurse  
Station**

2. LAST LAYER OF PPE  
DOFFING PITS  
(OUTSIDE ALL PT. ROOMS Warm Zones)

1. Doffing Pits outside of Pt. Rooms (Outer Layer Doff  
Hot Zones)

# CARE IV DECON PLAN



# OR ROOM IV

## Contamination Reduction Process

TYVEK DOFFING PIT  
FIRST LAYER

RED  
BIOHAZARD  
DOFFING PIT

HOT  
ZONE

OR ROOM IV DOOR

POST OP PPE TABLE

Doffing Pit

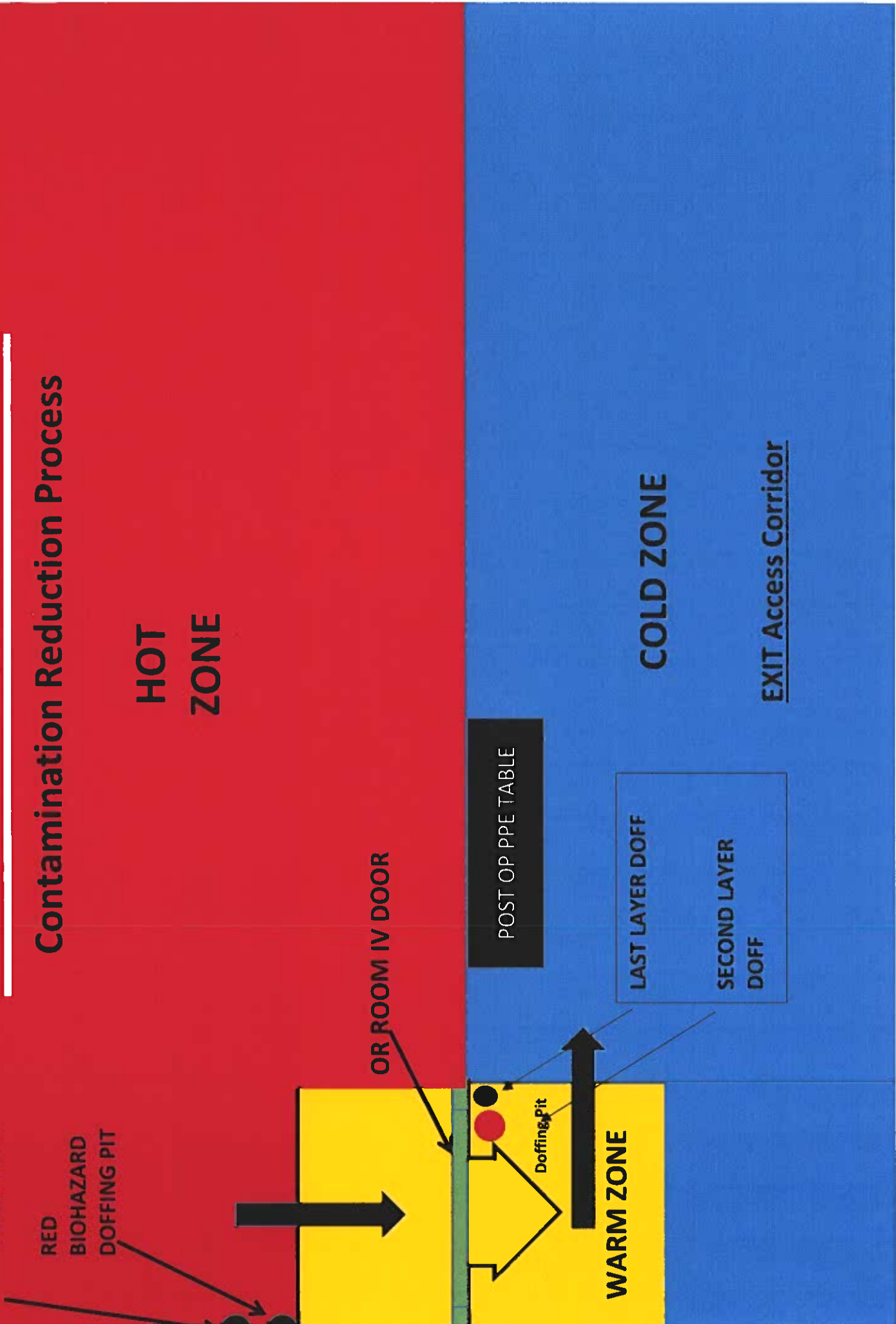
WARM ZONE

LAST LAYER DOFF

SECOND LAYER  
DOFF

COLD ZONE

EXIT Access Corridor



HOT ZONES

COLD ZONES

# EMERGENCY ROOM

**IMPORTANT! PLEASE READ!**

- EMS transport personnel will remain in the hot zone when bringing patients into the ER.
- After transfer of care is complete, proceed to the designated decontamination line.

2 ALPHA GUARD

Main Entrance

From Triage

WARM ZONES

From Radiology

